



Improve the efficiency of your work stations with our embossed ergonomic mats!

- Relieves stress on knee, foot and ankle joint pressure points resulting from long standing
- Provides better slip resistance and improved insulation than that of ceramic and cement floors
- As a logo mat, this anti-fatigue mat will reinforce your corporate position and inspire confidence

EMBOSSSED ANTI-FATIGUE MAT APPLICATIONS

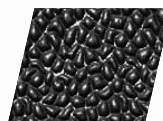
Provides a light duty solution for dry areas e.g.: Service Counter, Mailroom, Cashier Station, Warehousing/Packaging Station

FEATURES

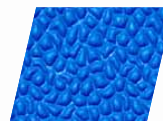
- Quality PVC foam is resistant to most chemical products
- High-quality embossed image technology for maximum durability
- Available in [Tuff-Spun®](#) 3/8" and in highly energized [Comfort-King™](#) 3/8" or 1/2"
- More than 25 PMS colors available (special color on request):



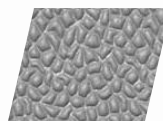
Comfort-King™



BLACK

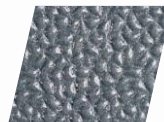


ROYAL BLUE*



STEEL GRAY

Tuff-Spun®



GRAY



BLACK

AVAILABILITY

STANDARD SIZES

- 2' X 3'
- 3' X 4'
- 3' X 5'
- 3' X 10'

ROLLS

Unavailable

TECHNICAL DATA

See individual Tuff-Spun™ or Comfort-King™ product sheets

FINISH



Style 1 - No color
Current picture is embossed



Style 2
Embossed with ink

CUSTOM CUTS

Available Call customer service

USE AND CARE

Spot clean with mild detergent

WARRANTY



TOTAL CONFIDENCE WARRANTY

Click or scan code for short video



AUTHORIZED DISTRIBUTOR



T: 1 800 628 5463
F: 419 332 4180
www.crown-mats.com